




RUSSELL Claw

When it comes to the muck-out phase of mill relining, the **RUSSELL Claw™** grapple attachment for your RUSSELL Mill Relining Machine (MRM) is a serious piece of equipment. Tough, durable and strong, its powerful jaws will grab knocked-in worn liners from wherever they fall and deliver them to the liner cart for removal. But above all, safety is its first priority. The Claw reduces the number of crew needed inside the mill during the hazardous muck-out operation and eliminates the need for manual slinging.



The efficient RUSSELL Claw™ is the ultimate solution for muck-out. Its powerful jaws can quickly and effortlessly pick up worn liners and deposit them on to the MRM Linercart. But what sets it apart is its focus on safety. The Claw eliminates the dangerous task of manually slinging liners, which has long been a major hazard during the process of mill relining. 

Tarnya McBurney

Product Manager, RUSSELL Mill Relining Placement Machines & RUSSELL Feed Chute Transporters
RUSSELL MINERAL EQUIPMENT

RME is the world's leading Original Equipment Manufacturer (OEM) of mill relining systems.



BENEFITS

- Transforms risk and safety: eliminates the need for manual slinging of liners
- Reduces confined space, suspended loads and mobile plant hazards for reline crews
- Versatile: works with all feed, shell and discharge liner designs from leading OEMs
- High payload capacity: Lifts any liner up to 8000 kg
- Superior toughness, durability and reliability
- Requires less crew for liner removal, improves resource allocation to value-adding tasks
- Improves RUSSELL MRM utilisation, efficiency and return on asset usage
- Enables MRM operators to increase liner manipulation speed without risk to crew safety
- Facilitates faster cycle times and reduced liner removal duration
- Creates new opportunities to increase mill availability



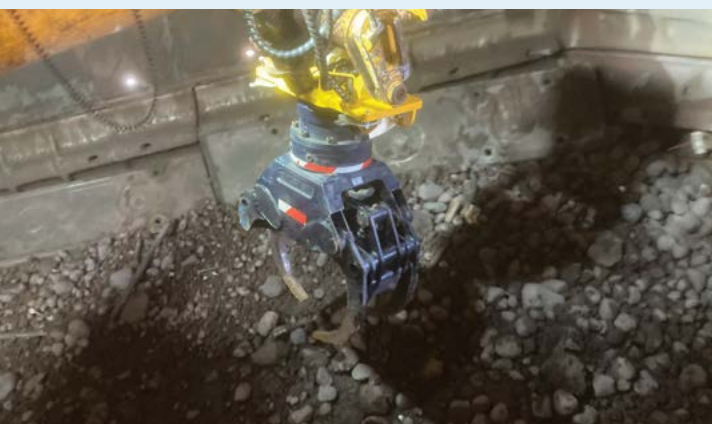
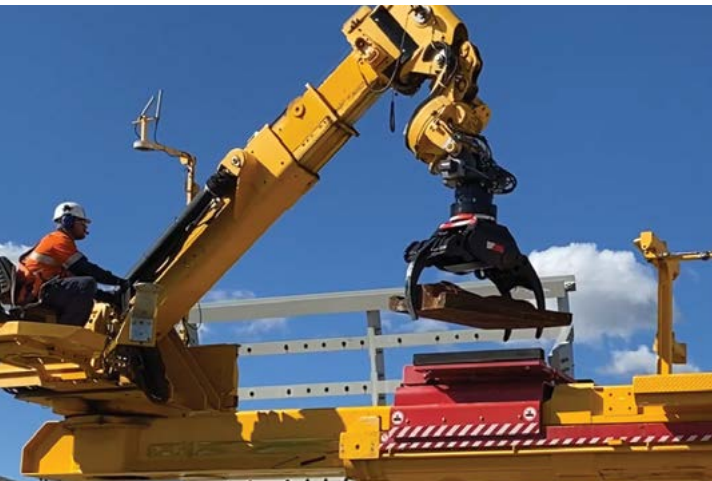
440+

Mine sites served by RME equipment and services.



550+

RUSSELL MRMs engineered, manufactured and delivered.



FEATURES

- Works with all feed shell and discharge liners without requirements for design changes
- High strength HARDOX tensile steel for superior toughness and wear resistance
- Incredibly rigid frame with three (3) hydraulically-powered moving jaws mounted
- Jaw fingers deliver a safe, secure and steady grip and constant closing force
- Integrated pry bar tool fitting to dislodge stuck liners off the mill shell
- Pry bar attachment is easy to insert utilise discarded grate liner bolts after knock-in
- Nonslip jaw slippers are easily replaceable
- 360° rotary actuator allows for easy pickup from the Grapple and Grapple Tool
- Fast and easy fitment: enters mill via the liner cart and installed by the grapple's single use adaptor tool
- Fits both 2-pin and 4-pin RUSSELL MRM grapples
- Easy to learn and operate via the MRM controls
- Suitable for most RUSSELL 7 and 8* Mill Relining Machines 2500kg – 8000kg
- Can be shared between multiple MRMs onsite
- Comes with sturdy storage cradle for easy use on site
- RUSSELL Claw™ technology and processes are supported by RME's proven operational readiness program and OEM-certified Customer Service Technicians

*Retrofits required for RUSSELL 7 and 8-axis MRMs pre-2023.



APPLICATIONS

- For mine sites seeking to transform risk and safety ratings and improve relining efficiency
- The RUSSELL Claw™ is intended for use during the muck-out phase of mill relining
- Enables fast, reliable, safe worn liner from the charge without manual slinging
- Part of RME INSIDEOUT™ Technologies tools and methods which remove reline crew from inside the mill during hazardous relining

Approved Product variant names	RUSSELL Claw™ 3T with Rotator	RUSSELL Claw™ 5T with Rotator	RUSSELL Claw™ 5T	RUSSELL Claw™ 8T with Rotator	RUSSELL Claw™ 8T
Lift capacity	1500 – 3000 kg	3500 – 5000 kg	3500 – 5000 kg	6000 – 8000 kg	6000 – 8000 kg
Claw Weight	~429 kg	~709 kg	~515 kg	~903 kg	~700 kg
Gripping Widths	1100 mm	1400 mm	1400 mm	1700 mm	1700 mm

WE ARE RME



RME was born 35+ years ago with a strong resolve to address our Customers' challenges. Since then, the RME Mill Relining System has quartered our Customers' time-to-reline and eradicated a great many safety issues. This same pursuit continues to drive the development of RME INSIDEOUT Technology which aims to eliminate fatal risk by enabling relining from outside the mill.

Cherylyn Russell

Chief Customer Officer, RUSSELL MINERAL EQUIPMENT



LEARN MORE

- product.management@rmeGlobal.com
- RME Regional Service Centre
- rmeGlobal.com